

## KEY FIGURES

Total number of teachers in public education in 2021.

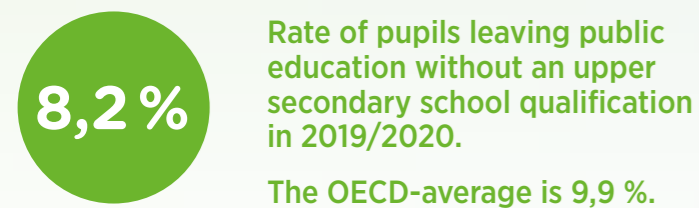


Note: Provisional data for the start of the school year 2021/2022. These figures are likely to change during the school year.

Average expense per pupil in public education in 2018. As a comparison, the OECD-average is 8 859 €.



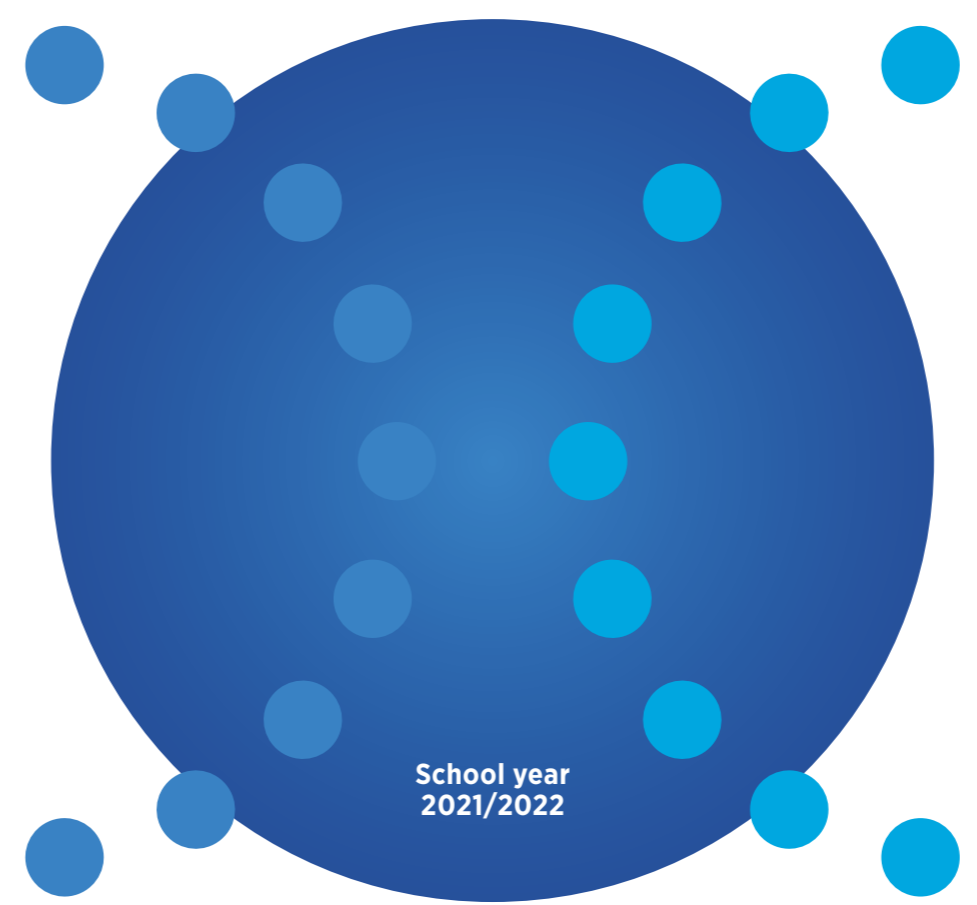
Note: Figures refer to 2018 in order to compare them with the OECD-average. These numbers include expenses from the pre-primary education to the secondary education.



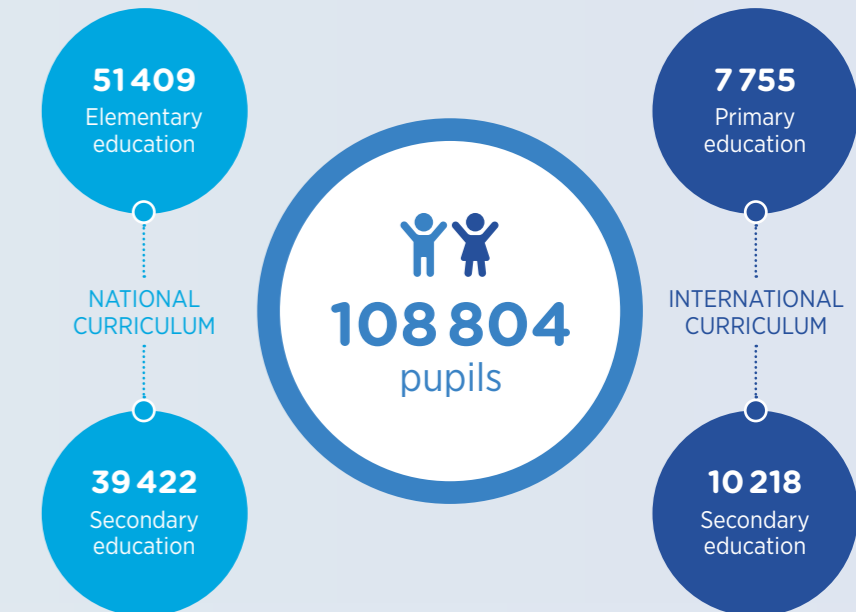
Source: Eurostat (EU-LFS), online data code [edat\_lfse\_14]. Note: The indicator covers 18 to 24 year-olds with ISCED 2 at most and who are no longer in formal or non-formal education and training.

# Education system in Luxembourg

## Key figures



## NUMBER OF PUPILS



## SCHOOLS

### Elementary education



### Secondary education



Note: The pupils in the European Schools of Luxembourg, where the places are primarily granted to children of EU staff, are included in private schools.

### Statistical publications

Enseignement fondamental  
Enseignement secondaire classique  
Enseignement secondaire général

### Contact

Ministère de l'Éducation nationale,  
de l'Enfance et de la Jeunesse  
SCRIPT, Service de coordination de la recherche  
et de l'innovation pédagogiques et technologiques

eduPôle Clausen  
33, rives de Clausen, L-2165 Luxembourg  
Tel.: (+352) 247 85960  
statistiques@men.lu  
edustat.lu  
dashboard.edustat.lu

Publication date: April 2022

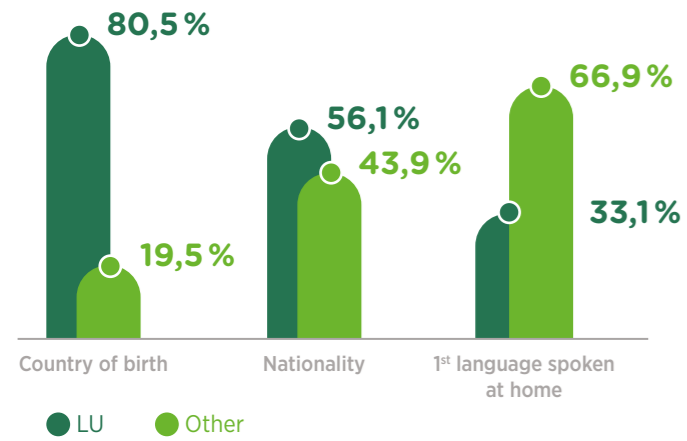


h2a.lu

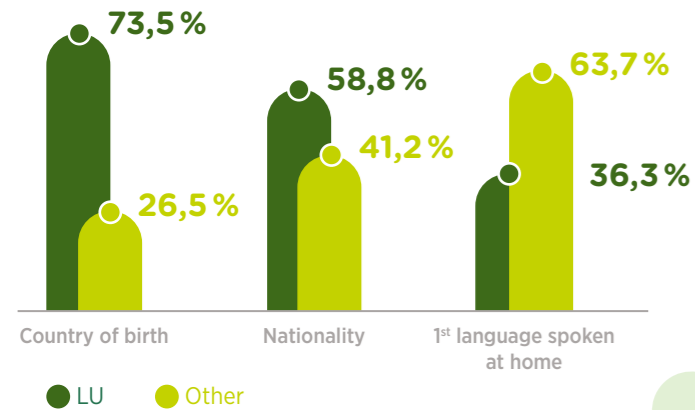


## LANGUAGE AND MIGRATION BACKGROUND – NATIONAL AND PUBLIC INTERNATIONAL CURRICULUM

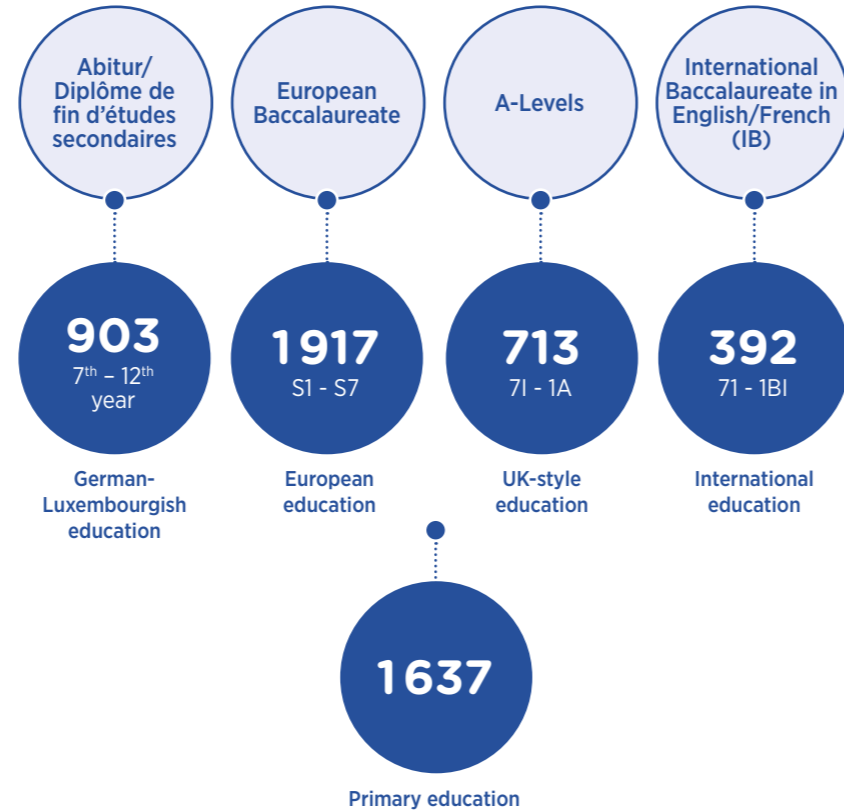
### Elementary education



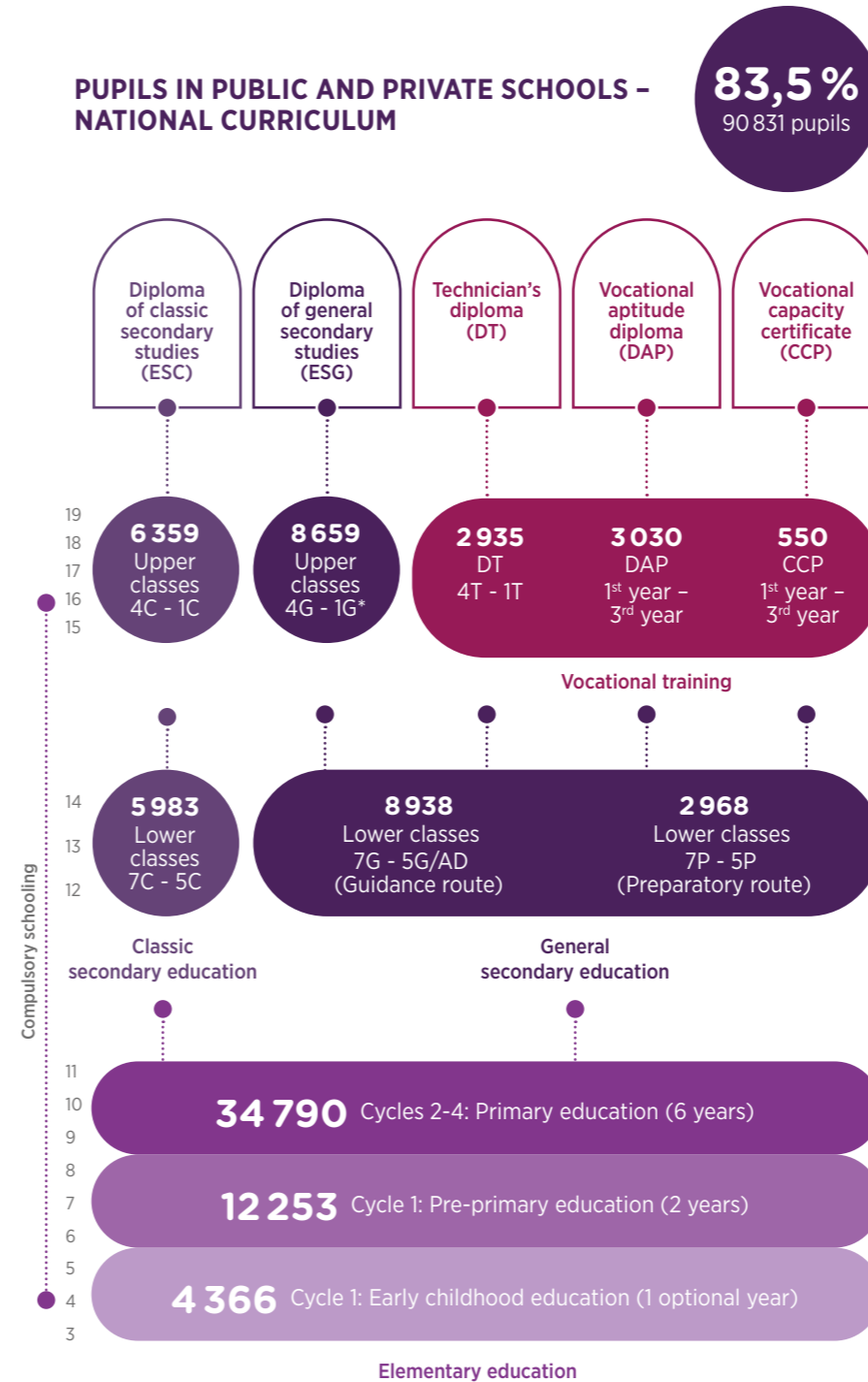
### Secondary education



## PUPILS IN PUBLIC SCHOOLS – INTERNATIONAL CURRICULUM

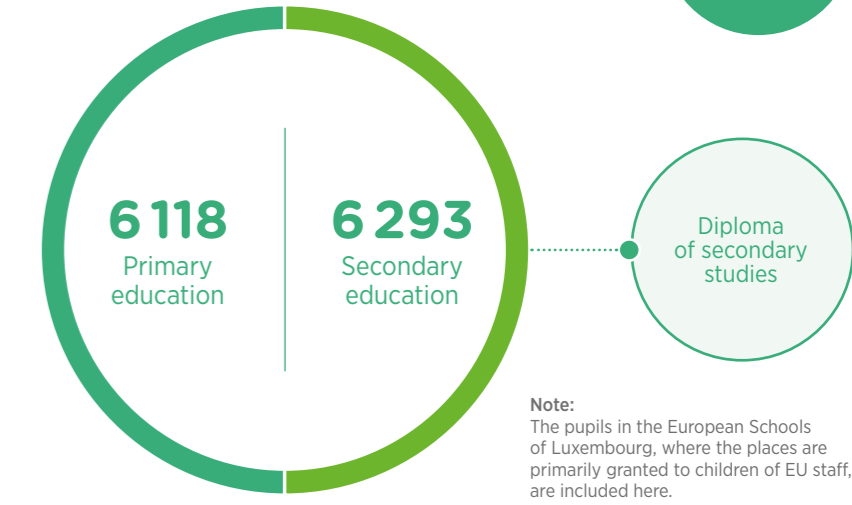


## PUPILS IN PUBLIC AND PRIVATE SCHOOLS – NATIONAL CURRICULUM



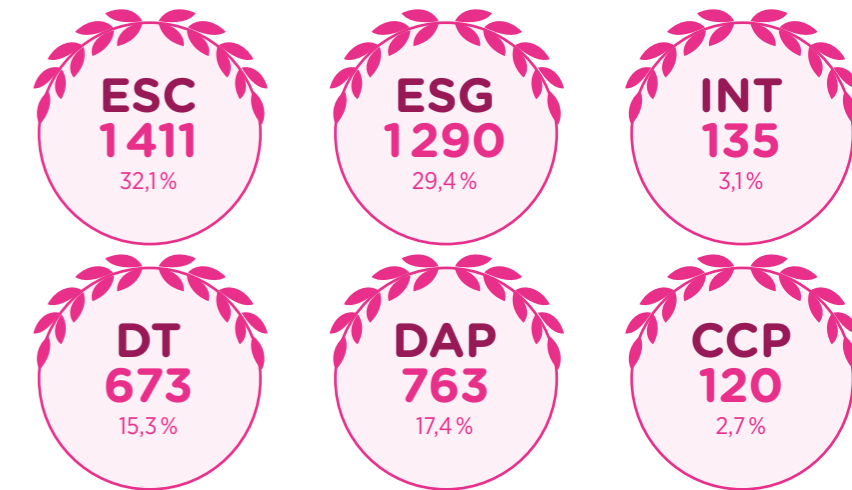
\* also includes one final year (ISGED class) in the subject area Educator

## PUPILS IN PRIVATE SCHOOLS – INTERNATIONAL CURRICULUM



Note: The pupils in the European Schools of Luxembourg, where the places are primarily granted to children of EU staff, are included here.

## DIPLOMAS AND CERTIFICATES ISSUED IN 2020/2021 (public and private schools)



Note: The pupils that have received a diploma of the German-Luxembourgish education are counted in the ESC-diplomas and the pupils of the international and UK-style education in the INT-diplomas. The public European education has only been created in 2016, therefore no diploma has been issued yet.