

SURFACE BRUTE : 262.50 ares

SURFACE NETTE : 196.46 ares

SURFACE PRIVEE PUBLIQUE NECESSAIRE  
A LA VIABILISATION : 66.04 ares

SURFACE A CEDER AU DOMAINE PUBLIC COMMUNAL :  
66.04 ares soit 25.2%  
DENSITE DE LOGEMENT : 39.6 lgt/ha

DONNEES STRUCTURANTES



PLAN D'AMENAGEMENT PARTICULIER

1-500

LOT1				LOT2				LOT3			
9.06				9.06				9.77			
221.00	-	-	806.00	221.00	-	-	806.00	221.00	-	-	806.00
483.62	ONC	1-u	7-c	420.63	ONC	1-u	7-c	448.52	ONC	1-u	7-c
tp	ha 14.50	-	B+18+15	tp	ha 13.00	-	B+18+15	tp	ha 13.00	-	B+18+15

LOT4				LOT5				LOT6			
5.86				7.38				5.78			
221.00	-	-	839.80	221.00	-	-	839.80	196.08	-	-	380.00
413.95	ONC	1-u	7-c	499.80	ONC	1-u	7-c	365.78	1-mb	1-u	1-u
tp	ha 14.00	-	B+18+15	tp	ha 14.00	-	B+18+15	tp	ha 8.50	-	B+25

LOT7				LOT8				LOT9			
3.73				2.35				2.16			
142.59	-	-	280.00	186.50	-	-	244.00	186.50	-	-	244.00
173.33	1-mb	1-u	1-u	130.58	1-mb	1-u	1-u	130.03	1-mb	1-u	1-u
tp	ha 7.50	-	B+18+15	tp	ha 7.50	-	B+18+15	tp	ha 7.50	-	B+18+15

LOT10				LOT11				LOT12			
2.01				1.96				2.51			
106.50	-	-	244.00	93.85	-	-	230.00	98.49	-	-	240.00
130.16	1-mb	1-u	1-u	116.13	1-mb	1-u	1-u	121.96	1-mb	1-u	1-u
tp	ha 7.50	-	B+18+15	tp	ha 7.50	-	B+18+15	tp	ha 7.50	-	B+18+15

LOT13				LOT14				LOT15			
3.16				1.98				1.87			
166.75	-	-	270.00	96.75	-	-	236.72	89.43	-	-	216.00
183.89	1-mb	1-u	1-u	125.39	1-mb	1-u	1-u	115.91	1-mb	1-u	1-u
tp	ha 7.50	-	B+18+15	tp	ha 7.50	-	B+18+15	tp	ha 7.50	-	B+18+15

LOT16				LOT17				LOT18			
1.85				2.80				4.86			
89.63	-	-	216.00	131.63	-	-	250.00	207.00	-	-	600.00
115.21	1-mb	1-u	1-u	153.07	1-mb	1-u	1-u	297.00	ONC	1-u	3-c
tp	ha 7.50	-	B+18+15	tp	ha 7.50	-	B+18+15	tp	ha 11.00	-	B+15

LOT19				LOT20				LOT21			
3.47				2.18				2.98			
120.88	-	-	309.88	117.75	-	-	301.75	120.88	-	-	309.88
133.08	1-mb	1-u	1-u	142.37	1-mb	1-u	1-u	132.80	1-mb	1-u	1-u
tp	ha 7.50	-	B+18+15	tp	ha 7.50	-	B+18+15	tp	ha 7.50	-	B+18+15

LOT22				LOT23				LOT24			
2.96				2.22				2.85			
121.50	-	-	311.50	117.75	-	-	301.75	120.88	-	-	309.88
133.83	1-mb	1-u	1-u	136.30	1-mb	1-u	1-u	133.82	1-mb	1-u	1-u
tp	ha 7.50	-	B+18+15	tp	ha 7.50	-	B+18+15	tp	ha 7.50	-	B+18+15

LOT25				LOT26				LOT27			
6.44				3.35				2.30			
204.00	-	-	680.00	120.88	-	-	209.88	117.75	-	-	301.75
419.50	ONC	1-u	8-c	142.81	ONC	1-u	1-u	140.21	1-mb	1-u	1-u
tp	ha 11.50	-	B+15	tp	ha 7.50	-	B+18+15	tp	ha 7.50	-	B+18+15

LOT28				LOT29				LOT30			
2.51				3.36				2.30			
124.71	-	-	319.61	114.00	-	-	261.90	108.75	-	-	249.55
146.74	1-mb	1-u	1-u	144.09	1-mb	1-u	1-u	135.23	1-mb	1-u	1-u
tp	ha 7.50	-	B+18+15	tp	ha 7.50	-	B+18+15	tp	ha 7.50	-	B+18+15

LOT31				LOT32				LOT33			
2.29				2.28				3.34			
108.75	-	-	249.55	108.75	-	-	249.55	114.00	-	-	261.90
138.95	1-mb	1-u	1-u	138.86	1-mb	1-u	1-u	144.06	1-mb	1-u	1-u
tp	ha 7.50	-	B+18+15	tp	ha 7.50	-	B+18+15	tp	ha 7.50	-	B+18+15

LOT34				LOT35				LOT36			
2.18				1.84				2.80			
95.20	-	-	243.80	92.04	-	-	232.84	97.08	-	-	245.08
117.50	1-mb	1-u	1-u	127.38	1-mb	1-u	1-u	126.78	1-mb	1-u	1-u
tp	ha 8.75	-	B+18+15	tp	ha 8.75	-	B+18+15	tp	ha 8.75	-	B+18+15

LOT37				LOT38				LOT39			
2.62				1.81				2.59			
92.18	-	-	238.01	88.65	-	-	228.48	92.18	-	-	238.01
118.12	1-mb	1-u	1-u	120.29	1-mb	1-u	1-u	123.69	1-mb	1-u	1-u
tp	ha 8.50	-	B+18+15	tp	ha 8.50	-	B+18+15	tp	ha 8.50	-	B+18+15

LOT40				LOT41				LOT42			
2.27				1.54				1.55			
80.75	-	-	209.10	74.25	-	-	198.55	74.25	-	-	198.55
110.25	1-mb	1-u	1-u	101.35	1-mb	1-u	1-u	101.35	1-mb	1-u	1-u
tp	ha 8.50	-	B+18+15	tp	ha 8.50	-	B+18+15	tp	ha 8.50	-	B+18+15

LOT43				LOT44				LOT45			
2.43				2.41				1.61			
78.25	-	-	202.35	78.25	-	-	202.35	75.25	-	-	201.25
109.17	1-mb	1-u	1-u	111.70	1-mb	1-u	1-u	100.75	1-mb	1-u	1-u
tp	ha 8.50	-	B+18+15	tp	ha 8.50	-	B+18+15	tp	ha 8.50	-	B+18+15

LOT46				LOT47				LOT48			
1.61				1.64				2.49			
75.25	-	-	201.25	75.25	-	-	201.25	77.75	-	-	201.00
100.75	1-mb	1-u	1-u	101.75	1-mb	1-u	1-u	109.38	1-mb	1-u	1-u
tp	ha 8.50	-	B+18+15	tp	ha 8.50	-	B+18+15	tp	ha 8.50	-	B+18+15

LOT49				LOT50				LOT51			
3.02				2.13				2.15			
80.25	-	-	240.25	89.25	-	-	232.25	89.25	-	-	232.25
132.33	1-mb	1-u	1-u	134.60	1-mb	1-u	1-u	135.04	1-mb	1-u	1-u
tp	ha 8.00	-	B+18+15	tp	ha 8.00	-	B+18+15	tp	ha 8.00	-	B+18+15

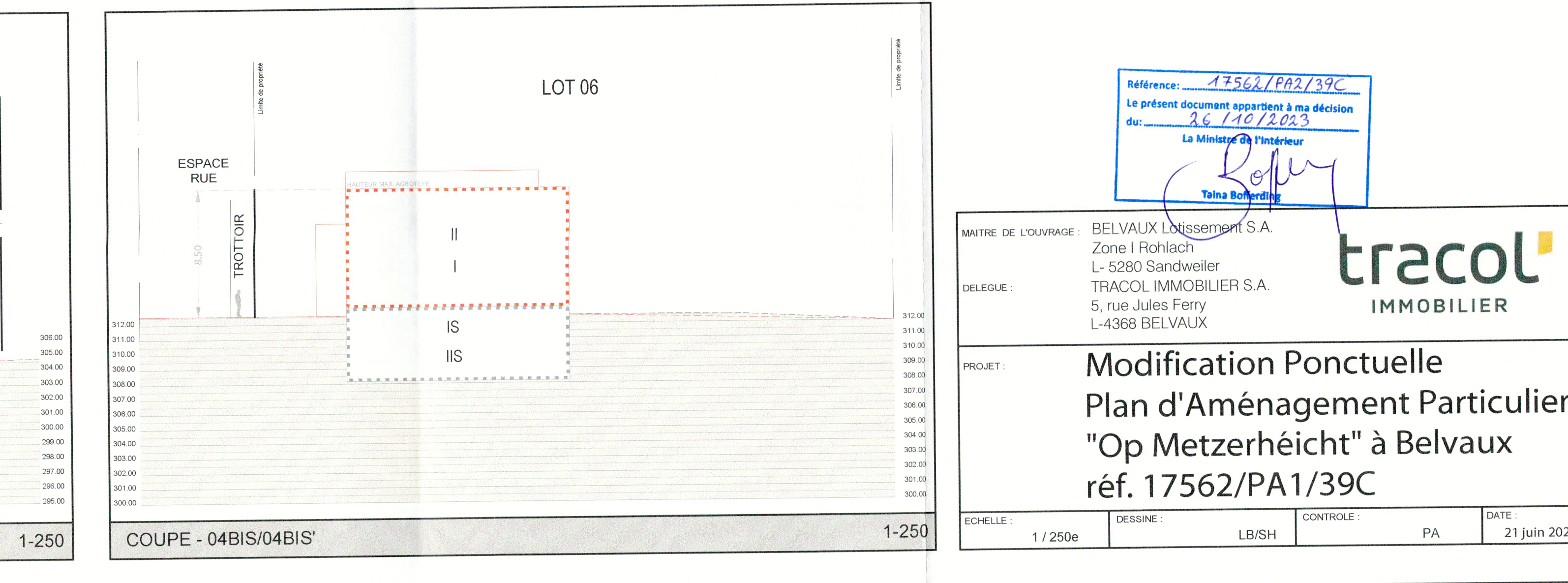
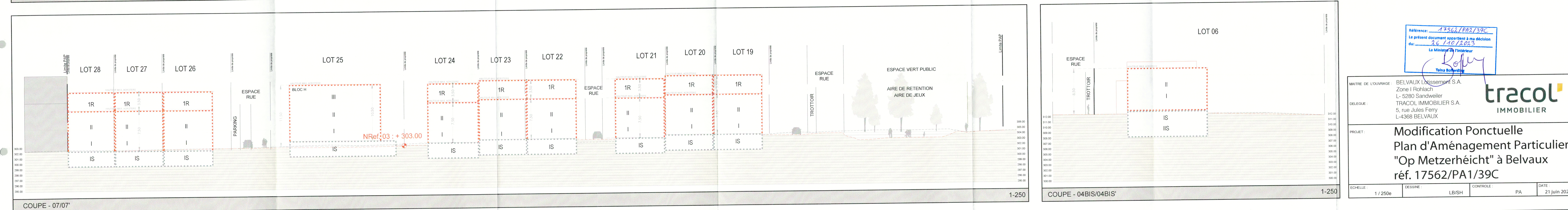
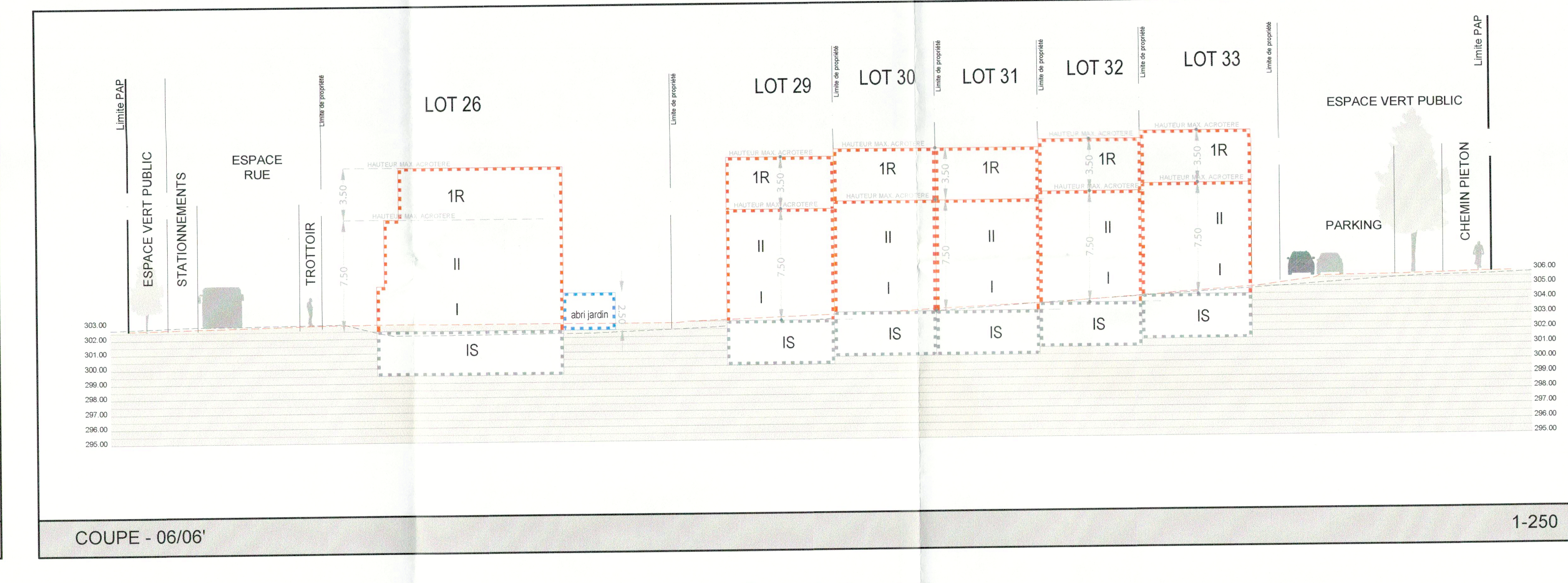
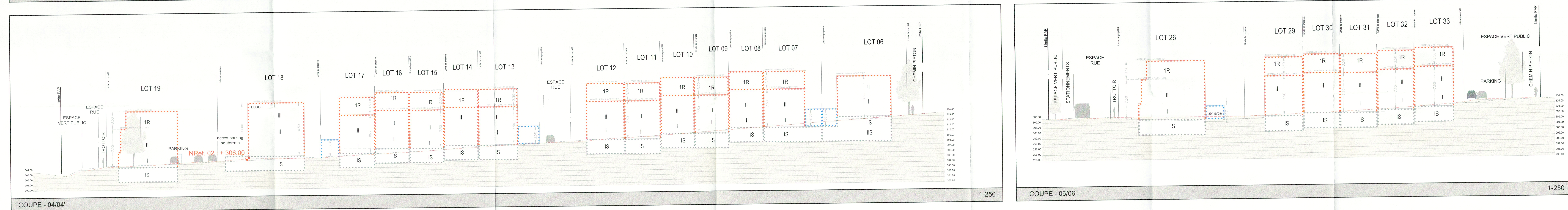
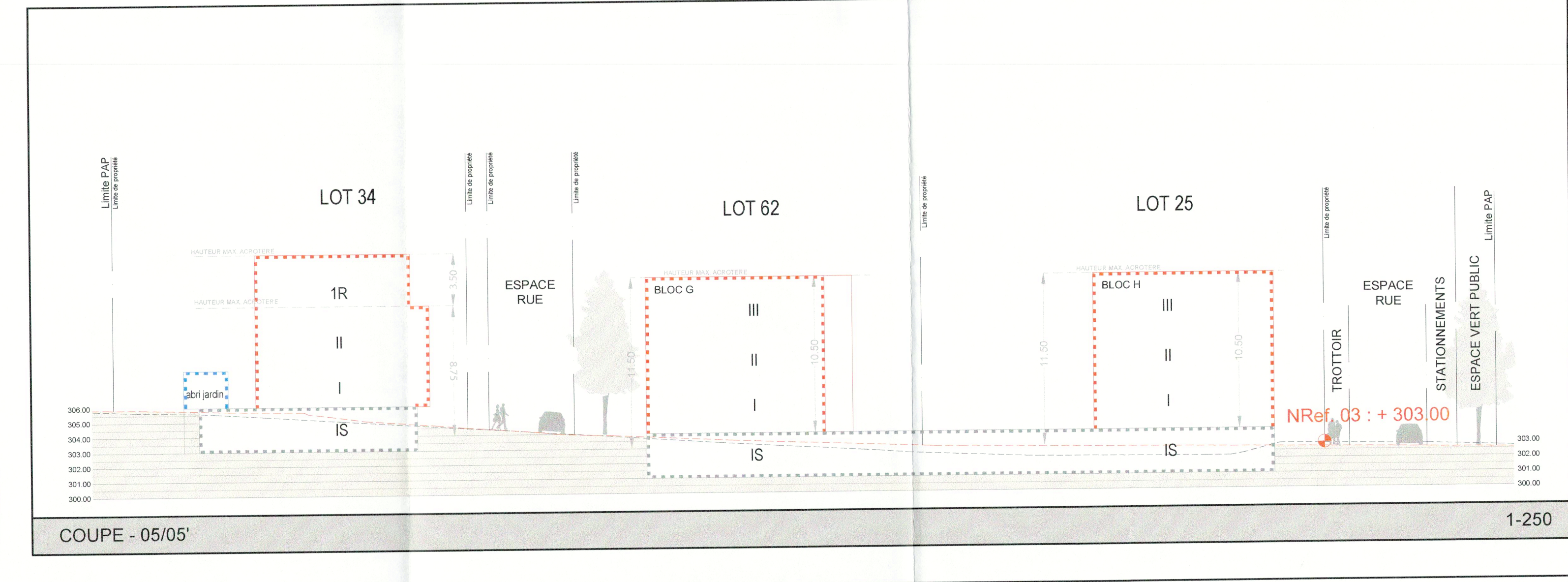
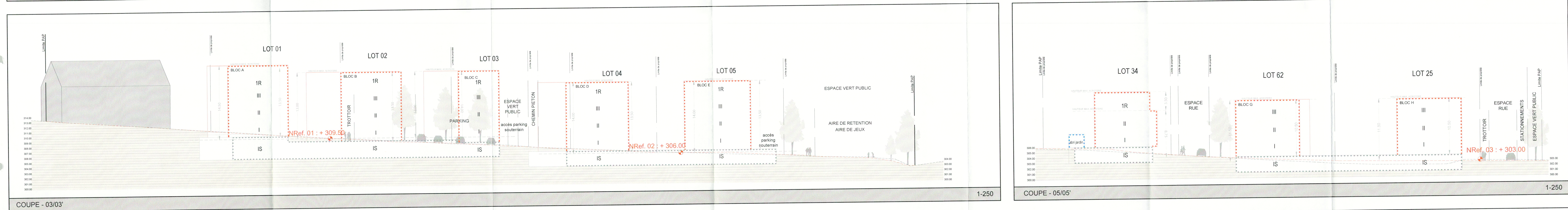
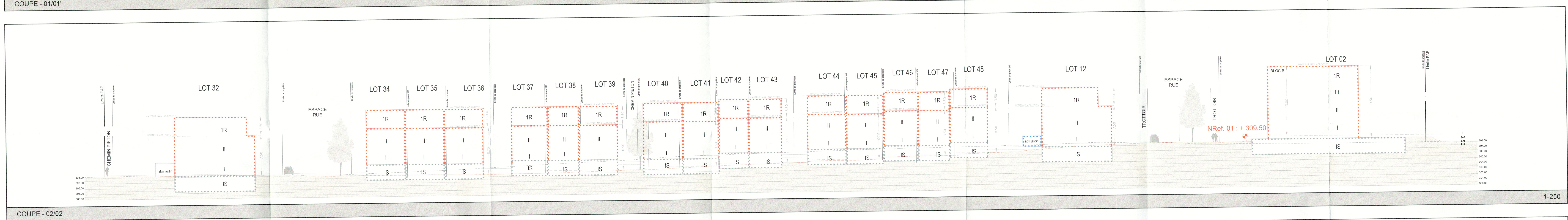
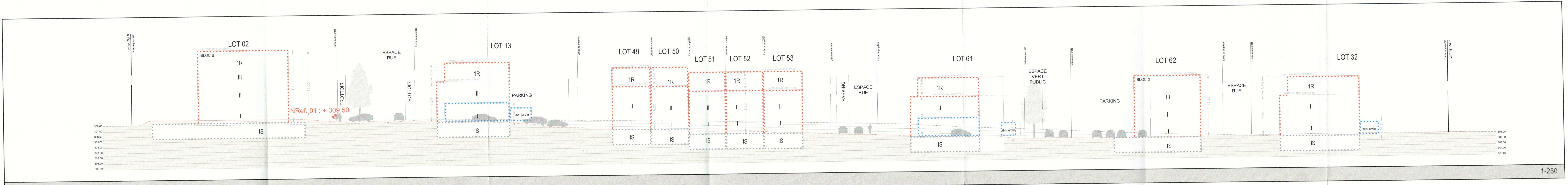
LOT52				LOT53				LOT54			
2.17				2.98				3.54			
89.25	-	-	232.25	92.25	-	-	240.25	142.75	-	-	296.65
130.39	1-mb	1-u	1-u	135.34	1-mb	1-u	1-u	169.30	1-mb	1-u	1-u
tp	ha 8.00	-	B+18+15	tp	ha 8.00	-	B+18+15	tp	ha 8.00	-	B+18+15

LOT55				LOT56				LOT57			
2.14				3.25				3.81			
80.25	-	-	240.05	140.75	-	-	297.65	117.25	-	-	270.75
120.50	1-mb	1-u	1-u	176.30	1-mb	1-u	1-u	152.70	1-mb	1-u	1-u
tp	ha 8.00	-	B+18+15	tp	ha 8.00	-	B+18+15	tp	ha 7.50	-	B+18+15

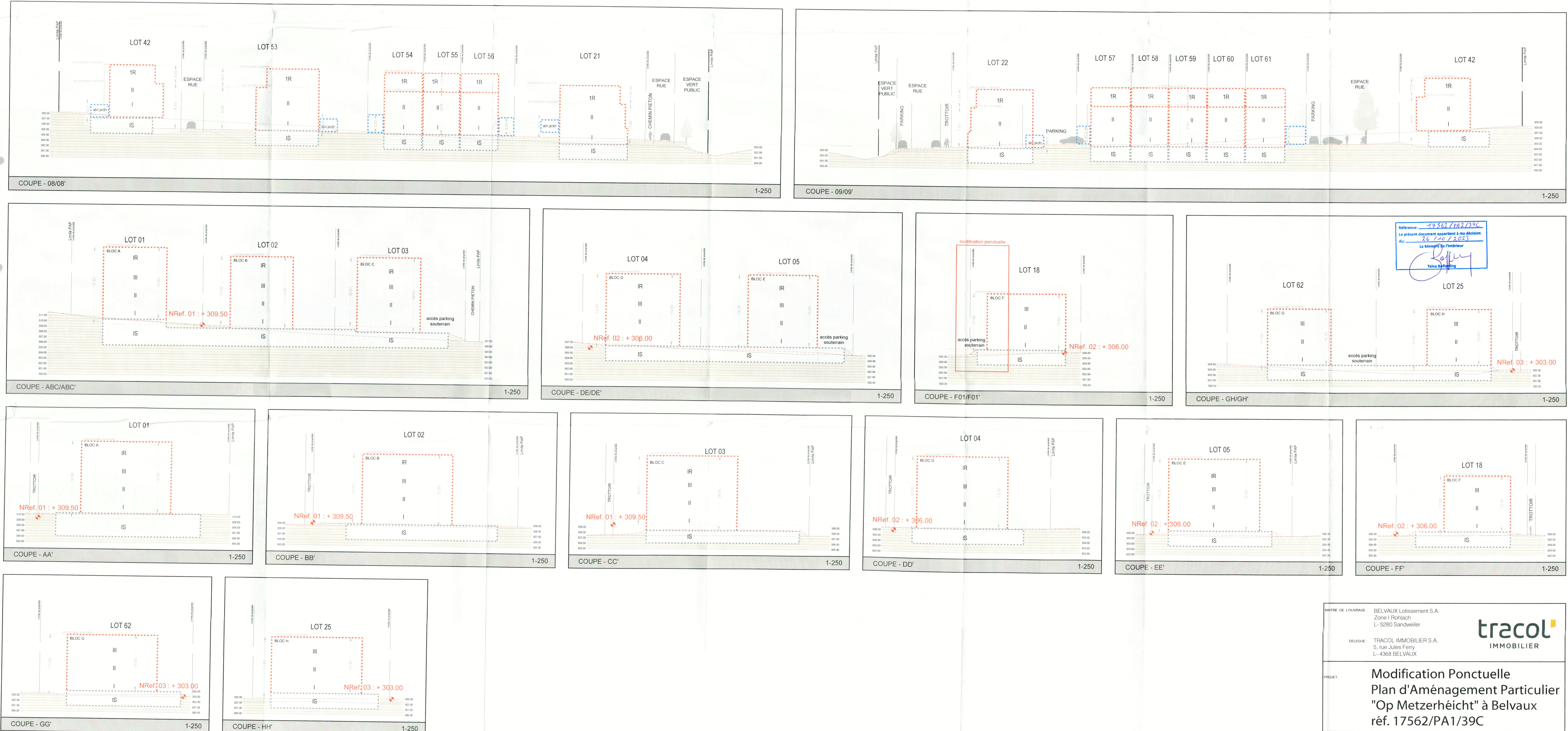
LOT58				LOT59				LOT60			
2.34				2.34				2.23			
111.75	-	-	250.99	111.75	-	-	250.99	111.75	-	-	250.99
141.15	1-mb	1-u	1-u	141.63	1-mb	1-u	1-u	141.55	1-mb	1-u	1-u
tp	ha 7.50	-	B+18+15	tp	ha 7.50	-	B+18+15	tp	ha 7.50	-	B+18+15

LOT61				LOT62							
2.82				7.31							
147.25	-	-	300.25	204.00	-	-	680.00				
189.20	1-mb	1-u	1-u	419.85	ONC	1-u	6-c				
tp	ha 7.50	-	B+18+15	tp	ha 11.50	-	B+15				










# Modification Plan d'aménagement particulier 'op Metzerhéicht' à Belvaux

MATRE DE L'OUVRAGE:	BELVAUX Lotissement S.A. Zone I Rohlach L- 5280 Sandweiler
DELEGUE:	TRACOL IMMOBILIER S.A. 5, rue Jules Ferry L- 4368 BELVAUX
PROJET:	Modification Ponctuelle Plan d'Aménagement Particulier "Op Metzerhéicht" à Belvaux réf. 17562/PA1/39C
ECHELLE:	1 / 250e
DESSINE:	LB/SH
CONTROLE:	PA
DATE:	21 juin 2023

 papaya architecture	OBJET: Partie Graphique	3
MODIFICATION PONCTUELLE PLAN D'AMENAGEMENT PARTICULIER		